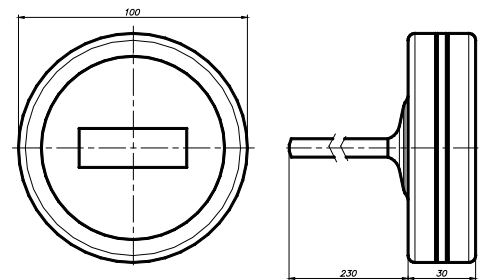


## Temperature controller SPR8

The temperature controller SPR8 is used for measuring and regulating the temperature.

Its main features are:

- ▶ ability to control two valves (cooling and heating),
- ▶ setting of parameters on three levels,
- ▶ access protected by passwords to prevent accidental modifications,
- ▶ possibility of connecting up to 247 controllers into a network (RS232/RS485),
- ▶ possibility of connection to a PC computer (RS232/RS485),
- ▶ design suitable for use in wet places and an aggressive atmosphere (IP 65),
- ▶ all metal parts are made of stainless steel,
- ▶ simple installation and enlargement of the system.



### Temperature controller SPR8-1, cable 5 m

Technical data:

- ▶ operating range: -9.9°C to 99.9°C (14,1°F to 211°F)
- ▶ resolution: 0,1 °C (up to 100°F is 0,1°F; above 100°F is 1°F)
- ▶ accuracy: max ±0.5°C (± 0.99°F)
- ▶ consumption: 2W (without loads)
- ▶ supply voltage: 24 V AC
- ▶ output 1 for heating: max. 2A / 24V AC
- ▶ output 2 for cooling: max. 2A / 24V AC
- ▶ connection cable length: 5 m
- ▶ installation of the controller in the well of 220 mm length.

### Temperature controller SPR8-11, cable 10 m

Technical data:

- ▶ connection cable length: 10 m

Other technical data are the same as in the basic SPR8-1 version.

### Temperature controller SPR8-2, hanging, probe 5 m, cable 10 m

Technical data:

- ▶ connection cable length: 10 m
- ▶ probe cable length: 5 m
- ▶ probe: installation in the well of 220 mm length or another tube in the tank. Because of the probe on the cable, the temperature controller can be placed on the desired place on the vessel or near the vessel.

Other technical data are the same as in the basic SPR8-1 version.



### Thermometer well

- ▶ thermometer well, R 1/2", length (L) = 220 mm
- ▶ thermometer well R 1/2", length (L) <>220 mm
- ▶ thermometer well NPT 1/2", external thread, length (L) = 200 mm

